

*Updated
Condo*
**in Cheesman
Park**



Just Listed | Melinda S. Howlett

1332 Williams St #101
Denver Colorado 80218

\$329,000 2  2  924 Ft²



New Perspective
REAL ESTATE

303-667-9528

**Have you
been waiting
for the *WOW*
in Cheesman
Park?**

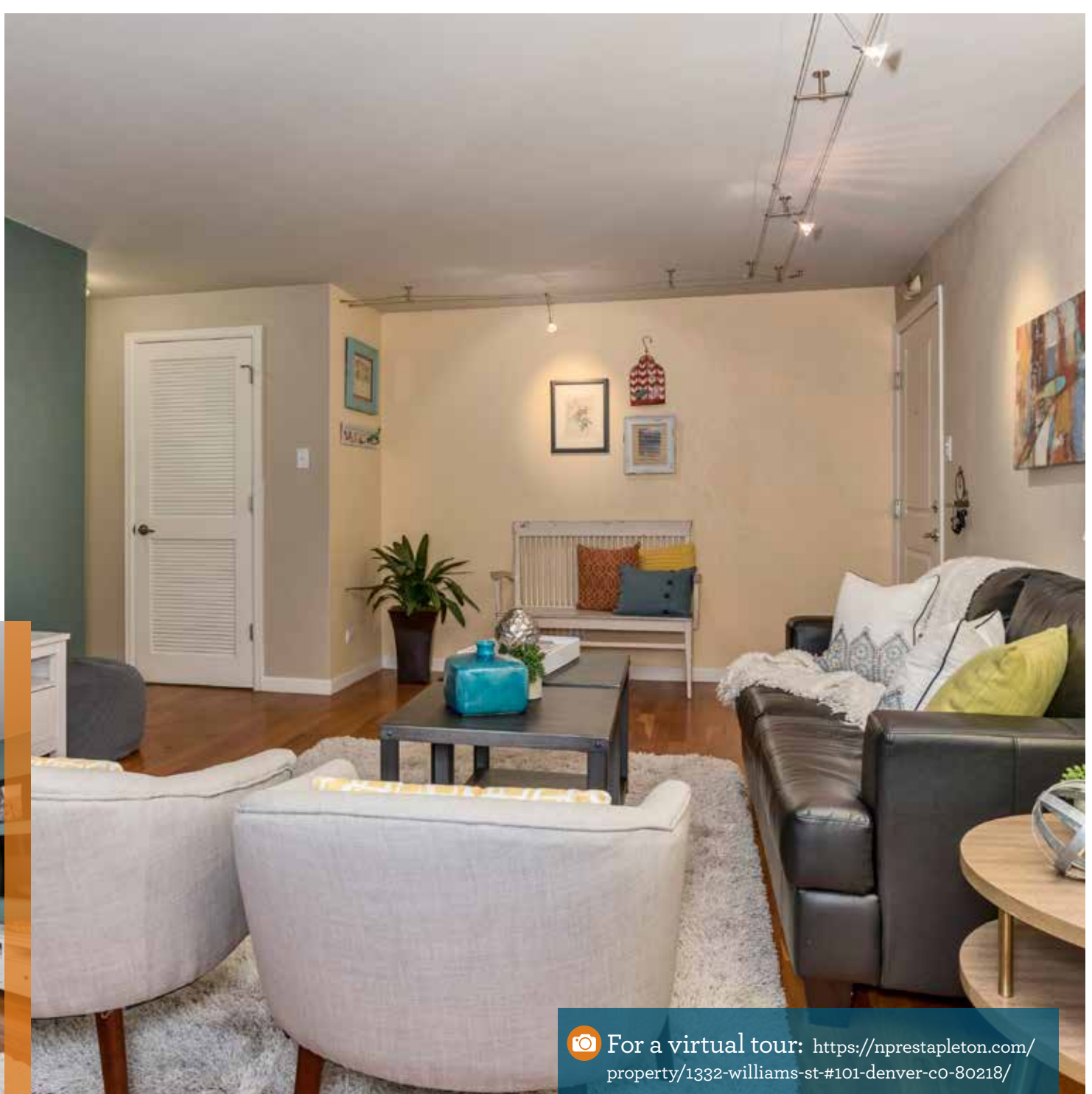



A rare find in Cheesman Park; a condo with a modern floor plan and a superb location! This two bedroom, two bath home has quality finishes and a thoughtfully designed floor plan with spacious rooms. The cherry hardwood floors add character and the kitchen boasts granite countertops and modern hardware. A full sized laundry room (and full sized appliances) along with plenty

of closet space increase the convenience factor of this charming home. Treat "The Park" like it's your own backyard... without the maintenance. Hip eateries and cultural venues are just steps away. As for commuting to downtown or Cherry Creek, it's a breeze on a bike, with mass transit or in a car. Additionally, a storage closet and a deeded parking space are included.

*Airy and bright
with large
windows.*

Stylish vibe emanates from each nook.



 For a virtual tour: <https://nprestapleton.com/property/1332-williams-st-#101-denver-co-80218/>



Find your retreat —
both inside and outside.



Updated Condo in Cheesman Park

npre

New Perspective
REAL ESTATE



**1332 Williams St
#101**

Denver, Colorado 80218

\$329,000

2 2 1

924 Finished Ft²

All information deemed reliable but not guaranteed. Prices subject to change. New Perspective Real Estate, LLC, and Equal Opportunity Company. Independently owned and operated. Printed in USA.

Favorite Features

Open floor plan
Cherry flooring
Granite counters
Laundry room with full sized appliances in the condo
Incredible central location
Deeded parking space

Neighborhood



The Cheesman Park Neighborhood is filled to the brim with character showcasing Denver's rich history. Dynamic venues & eateries can be found in abundance. The park provides pleasure year round!



Dora Moore Elementary
Morey Middle School
East High School



Melinda S. Howlett

REALTOR® | CNE

303-667-9528 MOBILE | TEXT

MELINDA@NPReco.com

www.NPREco.com



GET comfortable.

10515 East 40th Ave | Unit 113 | Denver Colorado 80239