

*Beautiful Bluff
Lake*
Paired Home



Just Listed | Jody E. Donley

2646 Iola Street
Denver Colorado 80238

\$449,900 3  3  1,671 Ft²



New Perspective
REAL ESTATE

720-290-8917

Stapleton's **ORIGINAL** real estate firm,
where home staging has always been complimentary.

**Have you
been waiting
for the *WOW*
in Stapleton?**



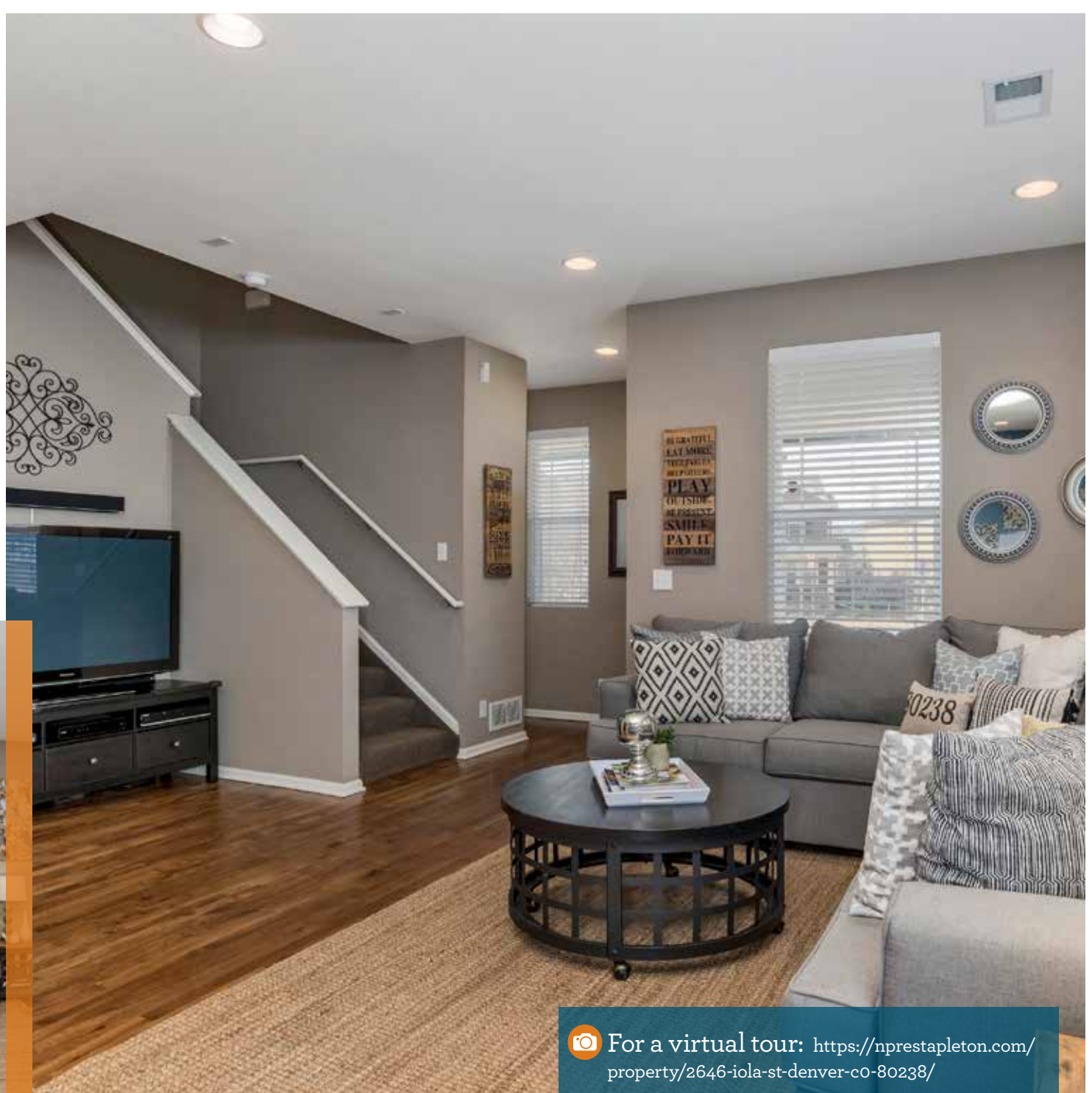
Located within an easy stroll to F15 Pool and Park, this home provides comfort at every turn. Engineered hard-wood flooring on the main level anchors the open floor plan and it's durable as well as visually pleasing. The kitchen with sumptuous granite counters, dark maple cabinetry and large island is tailor-made for today's busy lifestyle and for entertaining the crowd. The owner's suite boasts a soothing and elegant ambiance and with the large walk-

in closet and a generous full bath, it provides an idyllic retreat. The loft is perfect for a study area or work-out space. Run out to play in the low-maintenance backyard or relax on the shady front porch with a glass of lemonade. Weekend activities are a breeze – check out some wild life at Bluff Lake, take in some action at Stanley Markeplace and walk up for some ice cream at the upcoming Little Man's Constellation in the Eastbridge Town Center.

*The loft upstairs
provides flex
space.*



*Low maintenance
backyard for romping.*



For a virtual tour: <https://nprestapleton.com/property/2646-iola-st-denver-co-80238/>



Find your retreat — both inside and outside.



Beautiful Bluff Lake Paired Home

npre

**New Perspective
REAL ESTATE**



2646 Iola St

Denver, Colorado 80238

\$449,900

3 3 2

1,671 Finished Ft²

Favorite Features

Granite countertops and island
Engineered hardwood flooring
Shady, low-maintenance backyard
Proximity to Bluff Lake Nature Center

Neighborhood



F15 Pool and Park



The Bluff Lake Neighborhood has city and nature views. Stroll to hip eateries, trendy shops, workout studios and services at Town Center & Stanley Marketplace.



Stapleton is unique. It's a School of Choice neighborhood. Visit the *Stapleton 80238* section at **NPREco.com** to research the neighborhood's outstanding schools.

All information deemed reliable but not guaranteed. Prices subject to change. New Perspective Real Estate, LLC, and Equal Opportunity Company. Independently owned and operated. Printed in USA.

Jody E. Donley

Broker | Owner | Founder

720-290-8917 MOBILE | TEXT

JODY@NPReco.com

www.NPREco.com



GET comfortable.

10515 East 40th Ave | Unit 113 | Denver Colorado 80239