

*Nature
Lovers
Dream*



Just Listed | Melinda S. Howlett

604 Golden Eagle Circle
Golden Colorado 80401

\$775,000 5  3  **3,911 Ft²**



New Perspective
REAL ESTATE

303-667-9528

Have you been waiting for *the total package* in Golden?



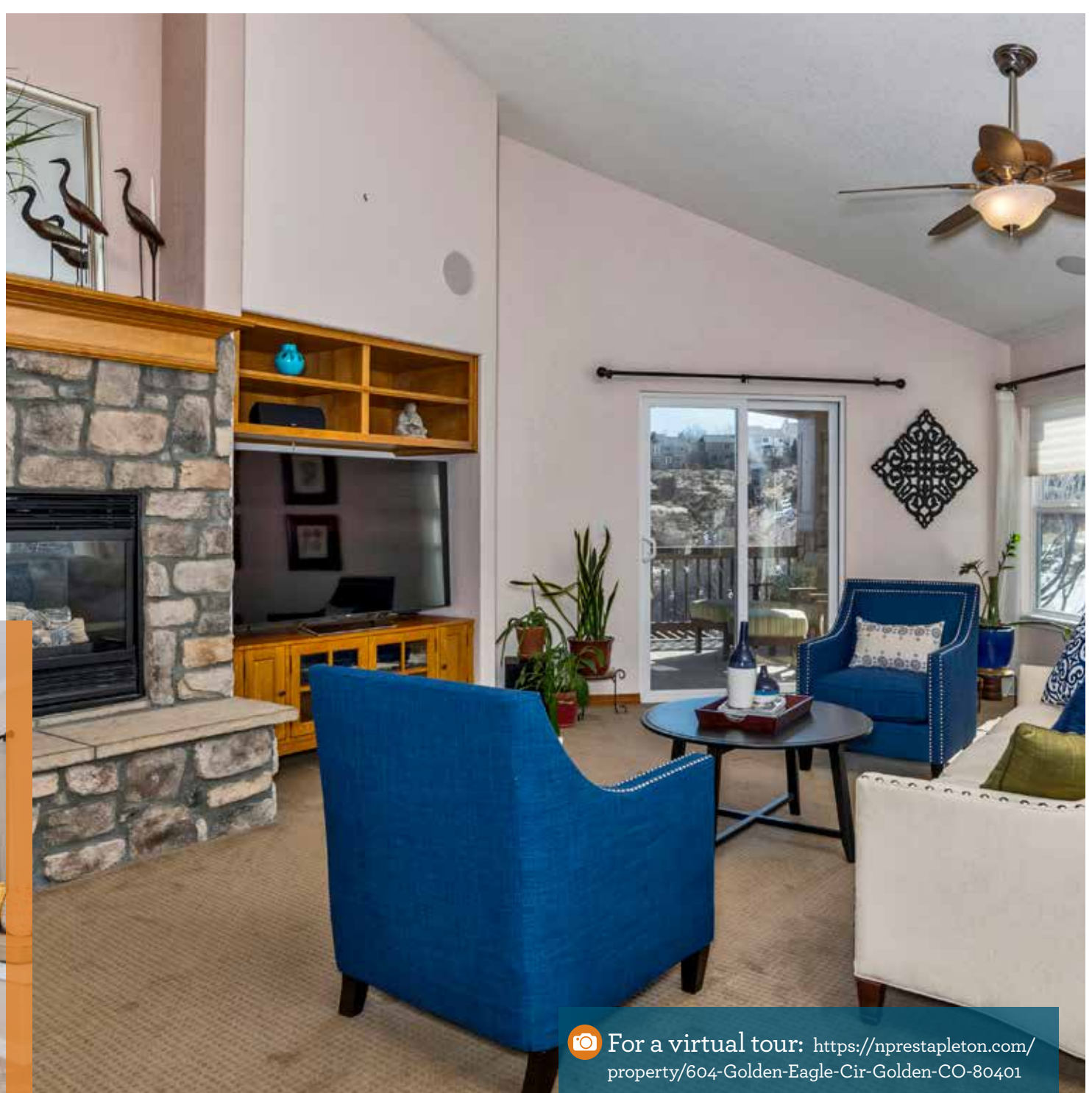
Spectacular and expansive views from the neighborhood of Stonebridge at Eagle Ridge! Colorado's glory is framed and highlighted in this ranch home that has a stunning walk-out basement. Retreat to the luxurious master suite and relax in the jetted tub or on the balcony soaking in the stunning views of the open space. The dramatic vaulted ceilings, river rock fireplace and the wall of windows in the open family and dining room


will provide pleasure in every season. The kitchen has been updated with granite & new appliances and conveniences include an island for prep work, storage in the pantry & mudroom, and a breakfast nook for cozy meals. Downstairs, find a basement brimming with natural light and decked out with the latest finishes. The guest suite will pamper visitors and the patio will beckon daily for moments of tranquility.

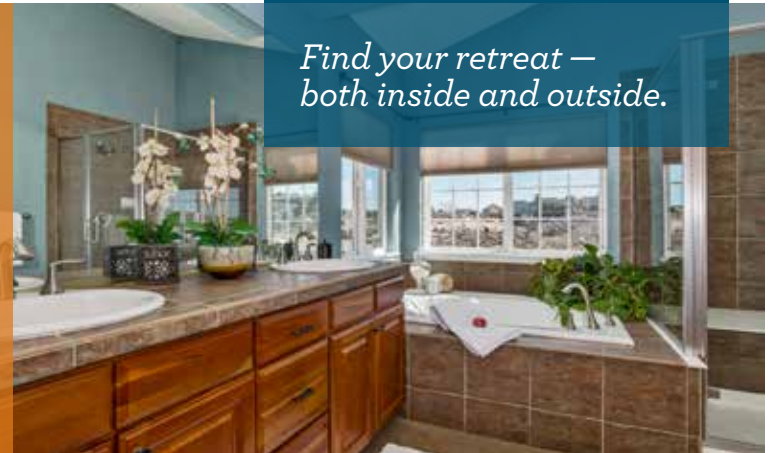
Views of foothills & open space and see wildlife almost daily.



Gorgeous finishes & natural light in the basement.



 For a virtual tour: <https://nprestapleton.com/property/604-Golden-Eagle-Cir-Golden-CO-80401>



Find your retreat —
both inside and outside.



Nature Lovers Dream in Golden

npre

**New Perspective
REAL ESTATE**



604 Golden Eagle Circle

Golden, Colorado 80401

\$775,000

5 3 2+

3,911 Finished Ft²

All information deemed reliable but not guaranteed. Prices subject to change. New Perspective Real Estate, LLC, and Equal Opportunity Company. Independently owned and operated. Printed in USA.

Favorite Features

Divine outdoor spaces
Natural light - skylights,
soaring ceilings &
picture windows
Viewing wildlife
Luxurious master suite
Updated kitchen with
newer appliances
Walk-out basement

Neighborhood



The Stonebridge at Eagle Ridge neighborhood is fairly new and perched near a more established community. Nestled in the foothills it boasts tranquility and views. Easy access to Golden and heading east or west on I-70.



Shelton Elementary
Bell Middle School
Golden High School



Melinda S. Howlett

REALTOR® | CNE

303-667-9528 MOBILE | TEXT

MELINDA@NPReco.com

www.NPReco.com



GET comfortable.

10515 East 40th Ave | Unit 113 | Denver Colorado 80239